

## ONS Business Demography Data: 21<sup>st</sup> November Release

### Active Enterprises

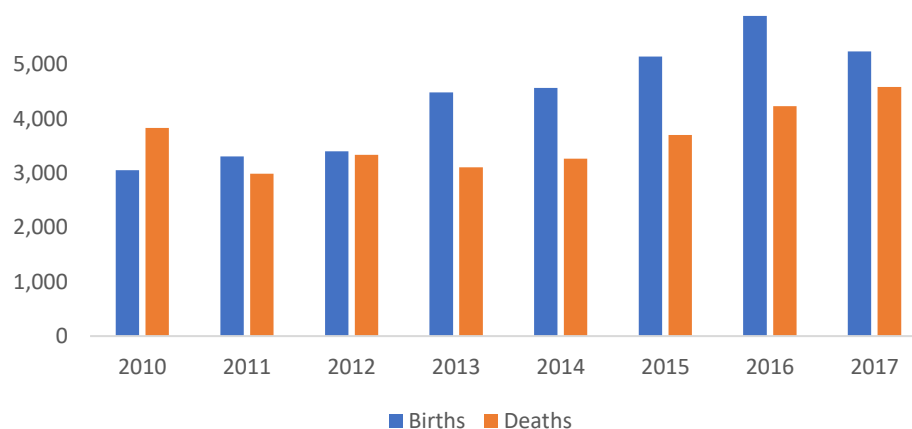
- The recent ONS Business Demography illustrates a growth in the Black Country business base with total of 38,505 businesses currently active in the Black Country in 2017. This represents an increase of 1,020 from 2016; and a 2.7% growth rate from 2016.
- Dudley had the highest number of active businesses in 2017 in the Black Country – 10,775.

	2012	2013	2014	2015	2016	2017
<b>Dudley</b>	9,720	9,905	10,180	10,395	10,675	10,775
<b>Sandwell</b>	7,660	7,890	8,365	9,020	9,835	10,125
<b>Walsall</b>	7,210	7,460	7,790	8,080	8,570	8,805
<b>Wolverhampton</b>	6,695	6,830	7,050	7,455	8,405	8,800
<b>Black Country</b>	31,285	32,085	33,385	34,950	37,485	38,505

### Business Births and Deaths

- Since 2011 there has been a greater number of business births than business deaths and the gap continue to improve with 5,240 births in 2017 (5,240 compared to 4,585 deaths – a difference of 655 companies).
- The birth rate per 10,000 population while increasing is still below the national average – 44 per 10,000 population compared to 61 per 10,000 for the England average.
- The national birth rate per 10,000 population has gone down from 68 in 2016 to 61 in 2017.
- To number of births has reduced from 5,895 in 2016 to 5,250 in 2017 but to reach the national average, the Black Country now needs an additional 1,997 business births compared to 2,062 in 2016.
- The death rate is below the national average – 39 per 10,00, population compared to 58 for the national average.

### Black Country Births/Deaths

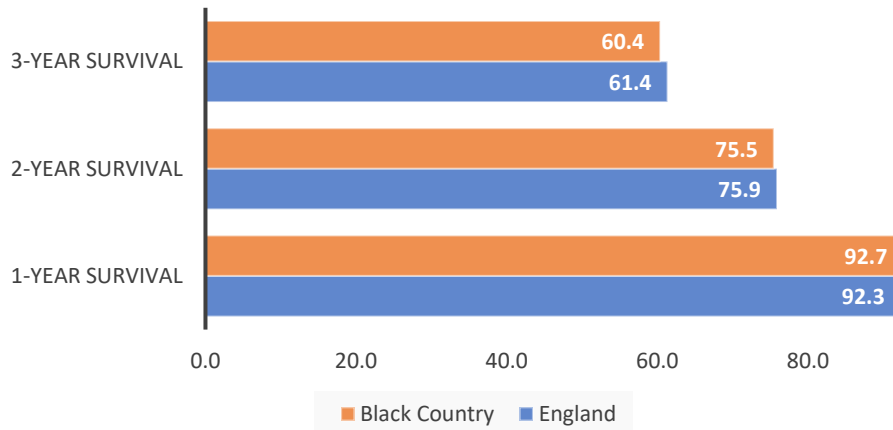


Source: ONS Business Demography 2017

## Survival Rates

- A total of 92.7% of Black Country businesses born in 2014 survived through the first year; higher than the national average of 92.3%. However, a different pattern was recorded after 2 years with 75.5% of businesses surviving compare to 75.9% nationally. After 3 years the survival rates for Black Country businesses that started in 2014 was slightly lower than the national average – 60.4% compared to 61.4% nationally.

**Business Survival Rate 2014**



Source: ONS Business Demography 2017